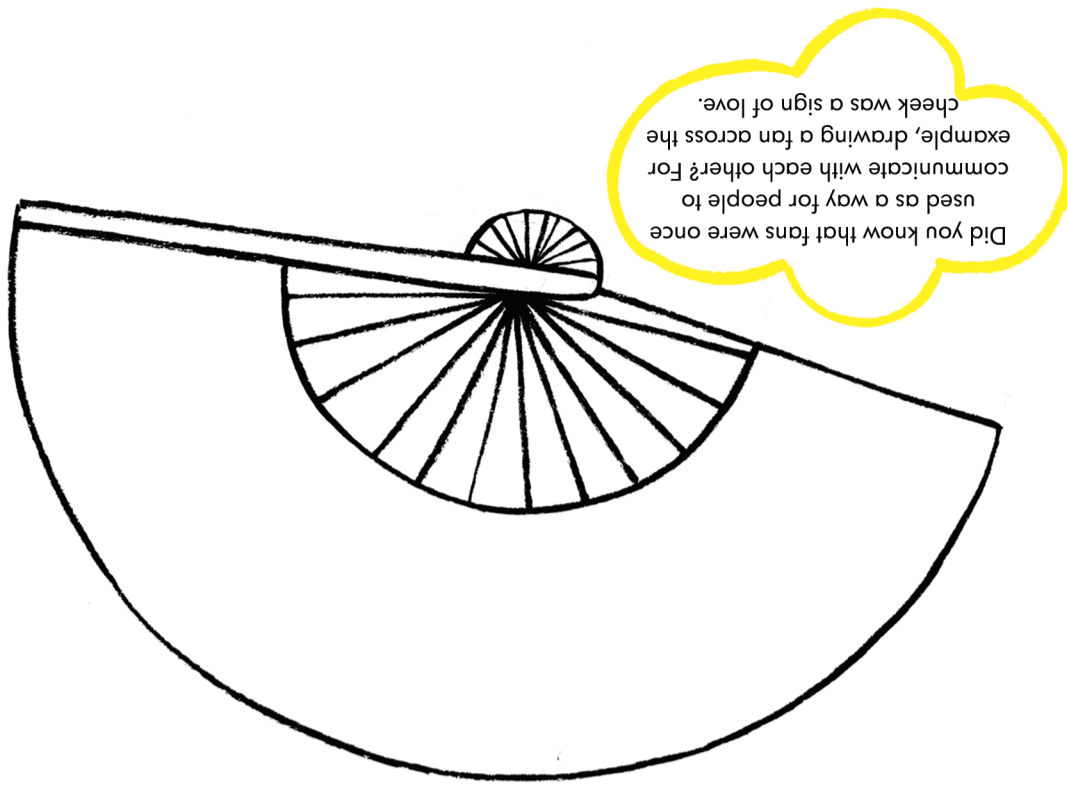


VERY VULGAR

NOT VULGAR

VULGOMETER

It is up to you to decide whether something is vulgar or not. Spot these items throughout the exhibition and draw an arrow to where you would rate them on the Vulgometer.



Did you know that fans were once used as a way for people to communicate with each other? For example, drawing a fan across the cheek was a sign of love.

Find the cabinet containing fans. They were made in the 17th-19th century, do you notice anything special about how they are decorated? What stories can you see? Why not tell your own story by drawing a design on the fan below.

COMMON GROSS FAMILIAR
BEAUTIFUL LOUD COLOURFUL WEIRD

In fashion, the word vulgar is always changing. What does this word mean to you? Circle the words below that make you think of vulgar.

VULGAR? vulgar | adjective | vul-gar: lacking sophistication or good taste

Welcome to *The Vulgar: Fashion Redefined*. This exhibition looks at taste in fashion and how the idea of 'what is vulgar' changes over time. Take a look around and decide for yourself: what makes something vulgar?

Well done for completing *The Vulgar: Fashion Redefined* exhibition activity sheet.

Answers:
 Showing Off - The mantua dresses are two meters wide at the hem.
 Too popular - Snow White, Bambi

Design and illustration by Charlotte Trounce

Pam Hogg, Divine Delinquent Collection, Autumn/Winter 2016 – 2017, Ready-to-wear
 Image by kind permission of SimonArmstrong.com

Viktor & Rolf, Lauren ensemble, Vagabonds Collection, Autumn/Winter 2016 – 2017, Haute Couture
 Team Peter Stigter

Prada, Spring/Summer 2014, Ready-to-wear
 Courtesy Prada

Pam Hogg, Lawless Collection, Spring/Summer 2016, Ready-to-wear
 Image by kind permission of SimonArmstrong.com

Together, we can inspire people of all ages to discover and love the arts. Donate today and share what you love about the Barbican with a new generation. Text "BARB99" £2 to 70070.

The Barbican Centre Trust Ltd is a registered charity (no. 294282)



The City of London Corporation is the founder and principal funder of the Barbican Centre

THE VULGAR

FASHION REDEFINED

13 Oct 2016 - 5 Feb 2017



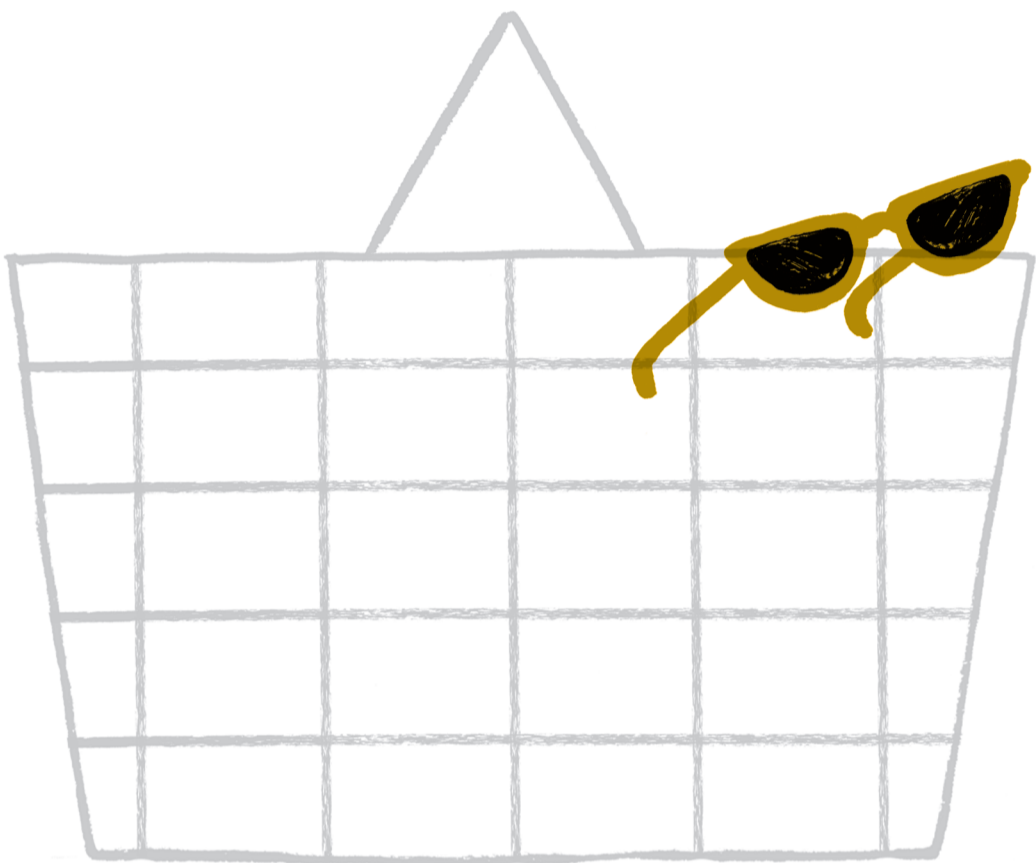
Activity Sheet

SHOWING OFF

There are dresses in this exhibition wider than a door frame, can you find them?
 Can you guess how wide the dresses are? _____
 Who do you think would have worn this type of dress? _____

ATTENTION TO PIECES

Can you find the fashion show inside a supermarket? Notice anything vulgar?
 Here, the shopping basket is filled with fashion accessories. What would you
 pack in your shopping basket? Draw them in the basket below.



TOO POPULAR

There are two Disney characters somewhere in the exhibition, can you find them?
 Tick which ones they are.

- Cinderella
- Bambi
- Snow White
- Mickey Mouse
- Peter Pan

If you were to design your own item of clothing, which cartoon character would
 you put on it? Why not design your own item of clothing in this television.



Find the dress covered in cans of soup, what do you think?



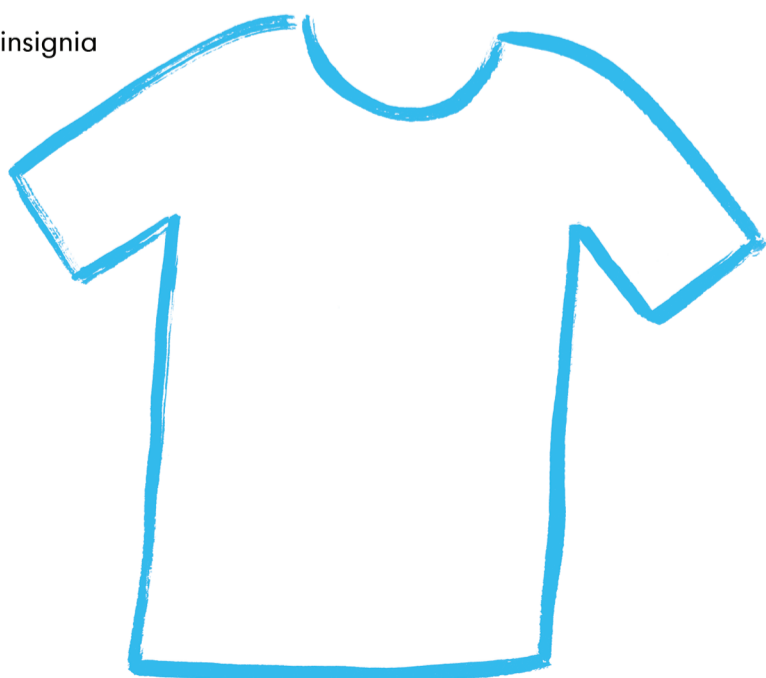
IMPOSSIBLE AMBITION

Insignia are symbols that people wear to show off their rank, wealth or authority.
 Sometimes symbols are used to communicate a message like "Stop!" or
 "Danger!"

Can you spy these symbols hidden in the clothing and hats in Impossible
 Ambition?



Design a t-shirt with insignia
 that represents you.



CUT AND PLAY

The fun thing about fashion is that it is a chance to be creative and play around
 with style. Colour in the clothes and accessories below. When you get home cut
 them out and put together your own outfit, vulgar or not!

